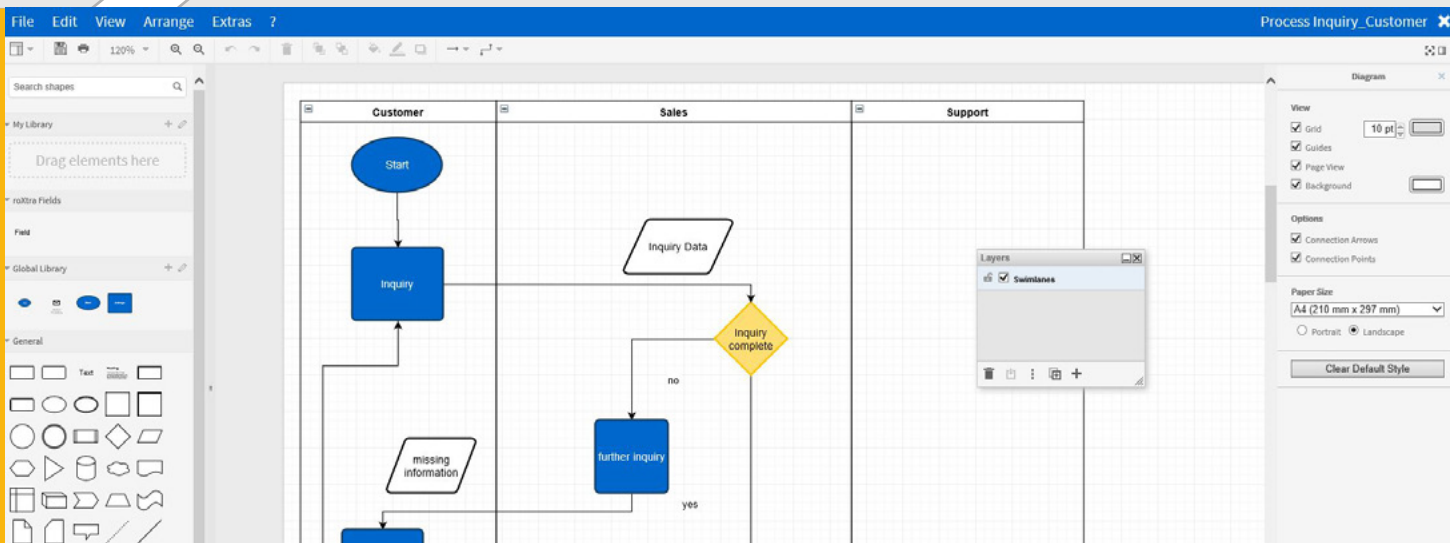


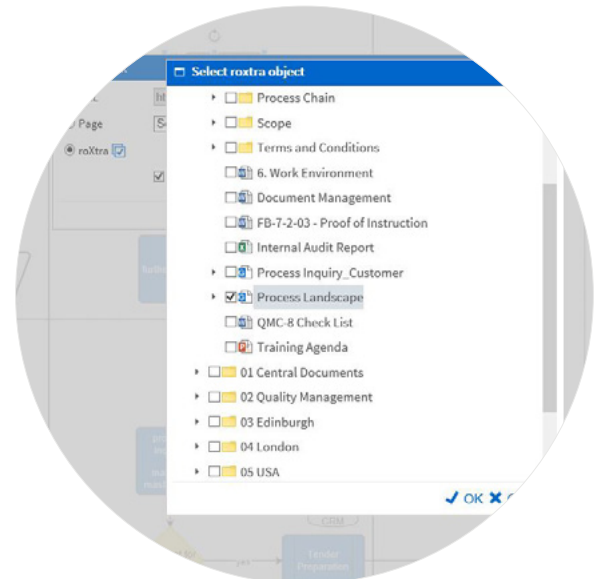
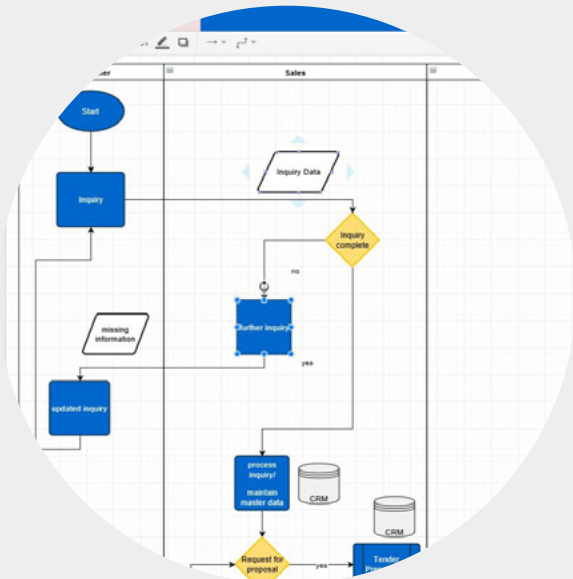
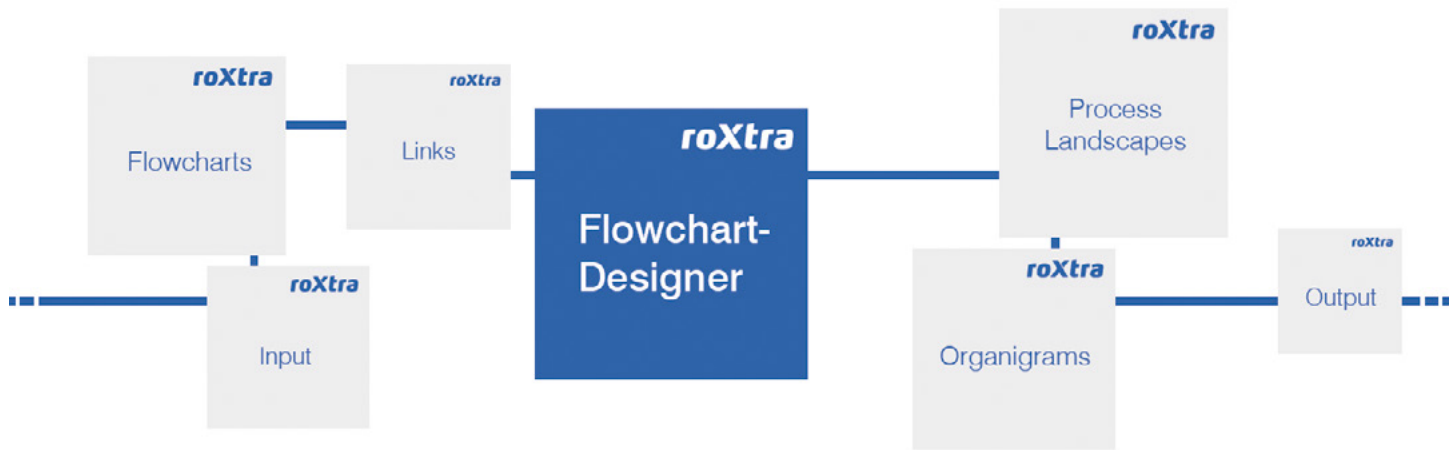
# roXtra extension



## Flowchart-Designer

*„Find out what potential a professional process management system could unlock for you!“*

Ever since the publication of the new ISO 9001:2015, the process-orientated approach has increasingly been the focus of QM and management. The description of key figures, responsibilities, inputs and outputs represents new requirements for many – which you can implement transparently and in an integrated manner using the roXtra Flowchart-Designer.



**Design any flow charts, process landscapes, organigrams or mindmaps.**

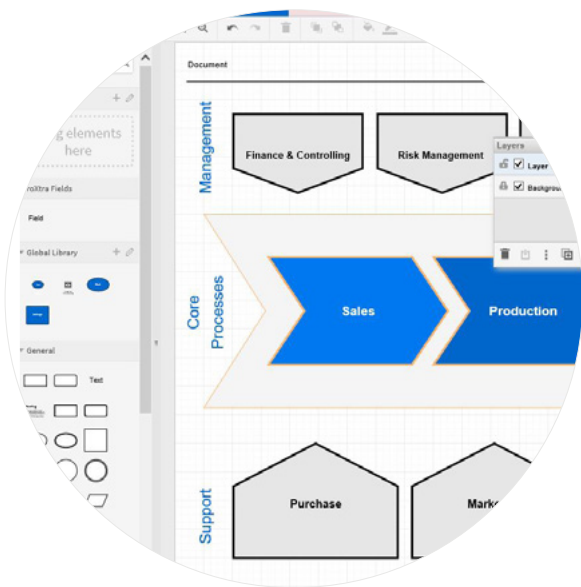
*Simple and intuitive to use*

To present your processes clearly and transparently, you can choose from various styles, shapes and colors. For various basic formats such as flow charts, process workflows, organigrams and mindmaps, you can access special templates in the Flowchart-Designer which already provide the basic structure and therefore make it easier for you to prepare processes.

**Integrate documents and information from roXtra into your processes.**

*Direct integration of various objects*

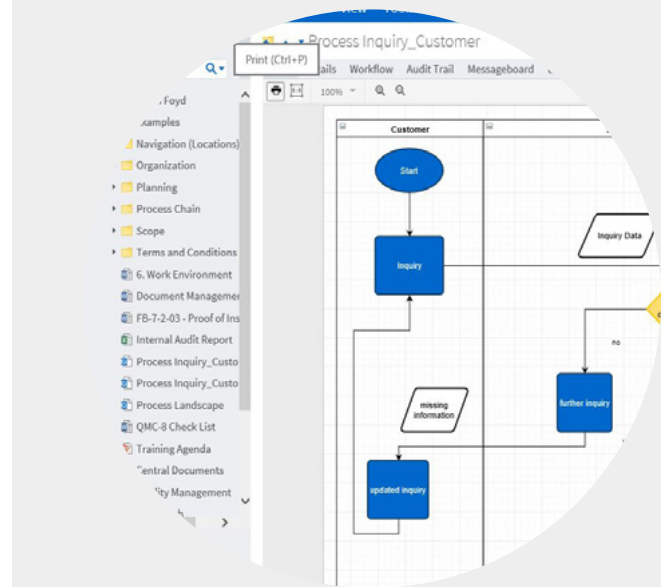
Save the associated forms and documents from your roXtra documentation directly in the individual process steps within your process landscape. roXtra fields can also be integrated into the processes and are automatically updated as database fields. You can also link to external content.



You can work independently of Visio or other locally installed programs.

*Easy access for your employees*

Your employees can create processes directly in roXtra and run them through a check and approval workflow. No other local programs, e.g. MS Visio, are needed. As access is web-based, the Flowchart-Designer can be used at any time and at any location, which means that you do not have to rely on locally installed applications in the future.



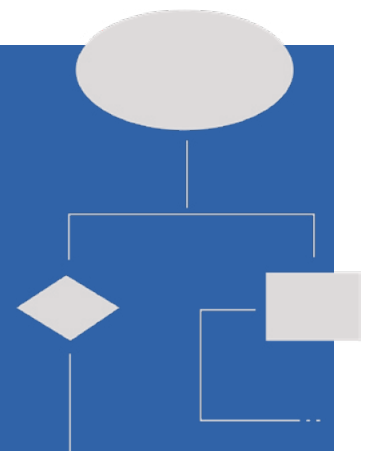
The process view for readers is automatically displayed in the roXtra browser.

*Reliable access to current process version*

The reading view is directly displayed in your roXtra browser. This enables easy and secure access at all times and ensures that your employees can always see and edit only the current version of a process. Furthermore, you can export our created charts and graphs as PDF files. Therefore the Flowchart-Designer supports you additionally in your standard-compliant documentation.

## Design processes in roXtra – Your benefits:

- > Design your processes freely and directly in roXtra
- > Using the existing workflow management
- > You can integrate and link documents, roXtra fields and objects
- > You benefit from simple intuitive handling in the normal environment
- > The web-based system gives you access from any location
- > You are independent of local applications (e.g. Visio)
- > Templates for various process displays make your work easier
- > You score well in an audit with a complete networked process landscape



Experience  
roXtra live!

Gain a direct insight into how the system works during your individual roXtra presentation.

Phone +49 (0)7161 505 700  
E-mail [service@roxtra.com](mailto:service@roxtra.com)

# Overview of roXtra modules & extensions

## ☀ roXtra Contracts

Manage all your contractual documents in roXtra. This module provides you with specific document types, meta data fields, contract files, statistics and reports.

## ☀ Import-Scanner

The Import-Scanner lets you import paper documents into the system. You can also add meta information directly to documents upon import.

## ☀ IDP-Connector

With the extension IDP-Connector the effort for user administration is minimized. You can choose between a connection to Active Directory, Azure AD or Okta.

## ☀ App & Mobile-Connector

The roXtra app gives you mobile access to your roXtra system. You can easily access your documentation and make optimum use of your time while you are on the move.

## ☀ Language Packs

You can set the language for each individual user in the roXtra system. The default languages from English to Spanish to Chinese can be easily implemented.

## ☀ CD-Builder

The CD-Builder lets you export data and documents for non-server-based use.

## ☀ Interfaces

Through linking and specific interfaces, documents in other systems can be accessed. You can also set up a connection to roXtra from other applications.

## ☀ Custom extensions

roXtra has a modular system structure and a comprehensive API. When customizing, individual interfaces and extensions can also be easily implemented.